

**SPICER®**



**HAXL-COREGUIDE-122021  
DECEMBER 2021**

**Guide**

Supersedes HAXL-COREGUIDE-112019  
Released 2019

# Spicer® Commercial Vehicle Carrier Core Guide



To place orders for all genuine Spicer® products, call 1.800.621.8084. For details on core inspections or general information, refer to the Spicer Core Guide on [www.SpicerParts.com](http://www.SpicerParts.com).



Product Information: [SpicerParts.com](http://SpicerParts.com) | E-Catalog and parts locator: [DanaAftermarket.com](http://DanaAftermarket.com)

# IDENTIFY



# LOCATE



# ORDER



# TRACK



# SIMPLIFIED.



[DanaAftermarket.com](http://DanaAftermarket.com)

**SPICER**<sup>®</sup>



**It's never been easier to do business with Dana.**

You've spoken. We've listened. Easily access the genuine Spicer parts information you need to succeed. Search by part number, product type, product line, keywords, and year-make-model. Place and track your orders. It's all here to help streamline your operations and grow your business.

Experience the new one-stop solution from Spicer today!

# Genuine Spicer® Commercial Vehicle Carrier Core Guide

(Including Core Acceptance Reference Guide)

## Section 1

### GENERAL POLICIES & PROCEDURES

Core Invoicing .....	3
Core Eligibility & Banks .....	3
Returning Cores .....	3
Axle Identification.....	4

## Section 2

### EVALUATION, CORE GROUPS, DEDUCTION SCHEDULE & GUIDELINES

Core Deduction Value .....	5
Axle Model / Core Group Listing .....	5
Core Deduction Schedule .....	6
Core Acceptance / Deduction Guidelines .....	6-7
Core Identification Chart and Deduction Information .....	8-9

## Section 1 – Core Policy

### GENERAL POLICY

Cores must be returned within 12 months of purchase to the designated Dana core return location. Core balances after 12 months will be removed from the core bank.

**EXAMPLE: An EX series carrier is purchased on 2/11/19. You will have eligibility to return that carrier through 2/28/20**

- Only the cores from axle models listed in Table 2 are eligible for return.
- Please return cores securely contained to the pallet. Damage while in transit due to poorly secured core(s) will be the responsibility of the customer.
- Cores will not be accepted if returned in unusable condition. See Table 3 for core deduction categories.

### CORE INVOICES/CREDITS

- Core transactions will be invoiced and reported in units using the core part number nomenclature examples in Table 1, column 2. Core part numbers are specific to the differential carrier part number.
- Cores returned will be credited against the oldest core eligible within the core group.
- Cores will be credited using part number nomenclature designated by core condition percentage. Examples shown in Table 1.

### CORE ELIGIBILITY & BANKS

- Core eligibility will be reported by core part number nomenclature examples in Table 1, column 2.

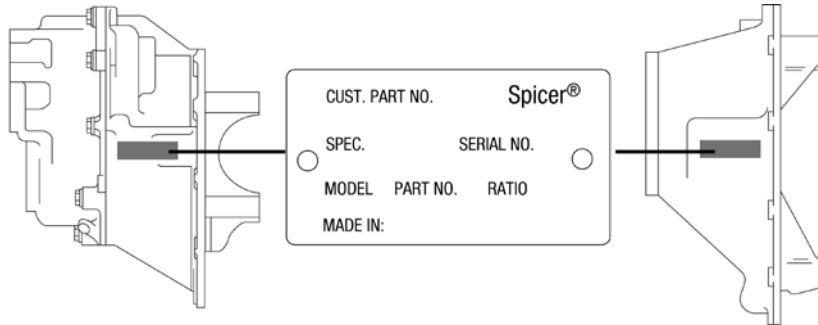
### RETURNING CORES

- Please log in to DanaAftermarket.com, select Core Return: Differential Carriers under My Account or send an email to coreteam@dana.com if access is not available.
- Dana will arrange shipments through our core return portal for three (3) or more cores; freight paid by Dana.
- Shipments of less than three (3) cores will receive 50% core deposit deduction based on core schedule category F on Table 3.

## Identification of Axle Models

### LOCATING MODEL DESIGNATION INFORMATION

- Axle Model Identification, Part Number and Serial Number are located on a tag at the axle centerline. This information will help you navigate this guide and identify the correct parts for servicing.



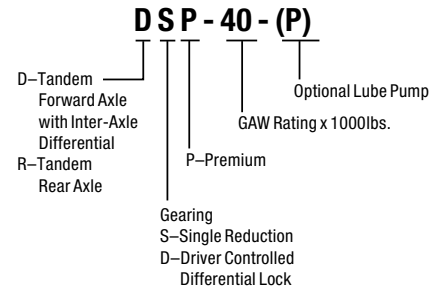
**NOTE**

- This is the serial number of the carrier assembly assigned by the manufacturing plant. This number will be ten (10) characters in length: Two (2) alpha characters for the plant code and eight (8) numbers.

**PLANT CODE:** HN - HENDERSON, KY  
MY - MONTERREY, MX

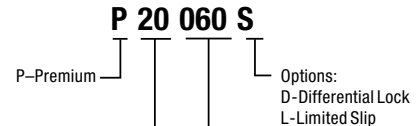
### USING MODEL DESIGNATION TO IDENTIFY AXLE COMPONENTS

- The Axle Model Identification number contains information that is important when purchasing service parts or new components, including vehicle, capacity and application information and model features. Use this guideline to understand your Axle Model Identification. If you need assistance, contact your Dana representative.



### FOR CARRIERS THAT HAVE A MISSING TAG, LOOK FOR ANY OF THE FOLLOWING:

- Casting Number
- Ring Gear Number
- Pinion Number
- Input Case Number
- Input Shaft Number
- Call our core management line at 800-621-8084 for identification assistance



### LOCATING MODEL INFORMATION ELECTRIC CARRIERS

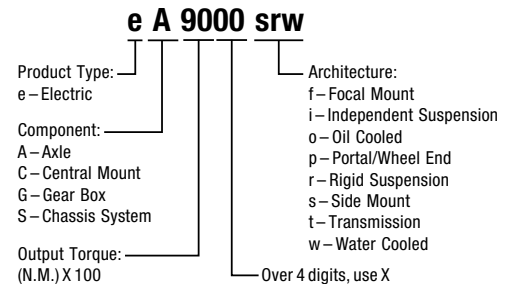
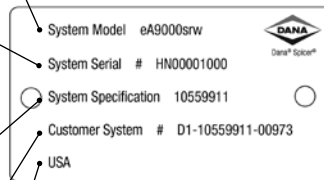
- System Model Number
- System Nomenclature

- System Serial Number
- MY0XXXXXXX - Monterey
- HNOXXXXXXX - Henderson
- LA0XXXXXXX - Laval

- System Specification Number
- 10 million numbers

- Customer System Number

- Country of Origin



## Core Deduction Value Axle Model / Core Group Listing



Table 1: Core Deduction Value	
Part Number Examples	Core Part Number Nomenclature Examples
DSP40355EX	DSP40355CORE
RSP40355EX	RSP40355CORE
D170410EX	D170410CORE
S170391EX	S170391CORE
D190430EX	D190430CORE
S190342EX	S190342CORE

Table 2: Core Group Listing				
Axle Model	Core Deposit	Deduction		
		0%	50%	100%
		1	2	3
R145S	\$500	\$500	\$250	\$-
D155, D155P, D156, D156P	\$1,750	\$1,750	\$875	\$-
D155D, D155DP, D156D, D156DP	\$1,750	\$1,750	\$875	\$-
R155, R156, R155/156	\$1,000	\$1,000	\$500	\$-
R155D, R156D, R155/156D	\$1,000	\$1,000	\$500	\$-
D170, D170P, S170E, D172, D172P	\$2,500	\$2,500	\$1,250	\$-
D170D, D170DP, S170DE, D172D, D172DP	\$3,000	\$3,000	\$1,500	\$-
S170, S170BC, S170NS, S170R	\$2,000	\$2,000	\$1,000	\$-
S170D, S170BC, S170DR	\$2,000	\$2,000	\$1,000	\$-
S/R172, S/R172P	\$2,000	\$2,000	\$1,000	\$-
S/R172D, S/R172DP	\$2,000	\$2,000	\$1,000	\$-
S/R175, S/R175P	\$2,500	\$2,500	\$1,250	\$-
S/R175D, S/R175DP	\$2,500	\$2,500	\$1,250	\$-
D190, D190D, D590, D590D, S190DE, S190E, S590, S590D	\$3,000	\$3,000	\$1,500	\$-
S190, S190D, S190DR, S190NS, S190R	\$2,500	\$2,500	\$1,250	\$-
DD404, DD404P, DDH40, DDH40P, DDP40, DDP40P	\$1,200	\$1,200	\$600	\$-
DS344, DS404, DS405, DS404P, DS405P, DSH40, DSH40P, DSH44, DSH44P, DSP40, DSP41, DSP40P, DSP41P, DST40, DST41P	\$1,000	\$1,000	\$500	\$-
19060D, 19060D PB, 21060D, 21060D PB, P20060DR, RD404, RD405, RDH40, RDH44, RDP40, RDP41	\$900	\$900	\$450	\$-
19060S, 19060S BC, 19060S NS, 19060NS PB, 19060S PB, 19060S PB BC, 21060S, 21060S BC, 21060S PB, P20060R, P22060S, RS404, RS405, RSH40, RSH44, RSH44 NS, RSP40, RSP41	\$750	\$750	\$375	\$-
(e)S9000r	\$5,000	\$5,000	\$2,500	\$-

**Core Deduction Schedule**

<b>Table 3: Core Deduction Schedule</b>		
Category	Description	Deduction Percentage from Full Core Value
A	Visible cracks, bulges, broken carrier or power divider cover	50%
B	Missing parts (input/output shafts, seals)	50%
C	Disassembled carrier	50%
D	Burned up unit/low oil/oil leak/low lube burn up	100%
E	Core not an active core part number	100%
F	Shipment of less than three (3) cores	50%
G	Failure to drain carrier	50%
H	Unable to rotate freely and/or broken parts	50%
I	Missing and/or damaged PDU parts	50%
J	Missing and/or damaged gearing	50%
K	Excessive rust that causes pitting and damage (due to prolonged weather exposure)	100%

Missing parts, including but not limited to: ring & pinion, input, output shaft, inter-axle differential assembly, helical gears.

**Core Acceptance / Deduction Guidelines**

**Code: A**

**VISIBLE CRACKS, BULGES, BROKEN CARRIER OR POWER DIVIDER COVER**

Failure crack through carrier housing



Bulge/crack in carrier housing



**Code: B**

**MISSING PARTS**

Carrier Core missing "Input Shaft"



Carrier Core missing "Power Divider Cover"- Carriers were opened up and additional parts missing



**Code: C**

**DISASSEMBLED CARRIER**

Carrier Cores sent in disassembled, usually in baskets, on skids or in boxes



**Code: D**

**BURNED UP UNIT (LOW AND/OR NO OIL)**

Carrier Cores with evidence of failure related to low or no oil (burn-ups) are not eligible for credit



Crows footing - no lube between the pinion and the ring gear - hash marks in the gear



**Code: E**

**CORE NOT AN ACTIVE CORE PART NUMBER**

Carrier Core must be included in an active core part number (see Table 2) to be eligible for credit

**Code: F**

**SHIPMENT OF LESS THAN THREE (3) CORES**

**Code: G**

**FAILURE TO DRAIN CARRIER**

Carrier Core must have all lubricants drained before shipment. Any core received with lubricant will be subject to deduction

**Code: H**

**UNABLE TO ROTATE FREELY AND/OR BROKEN PARTS**

**Code: I**

**MISSING AND/OR DAMAGED PDU PARTS**

**Code: J**

**MISSING AND/OR DAMAGED GEARING**

Including crows footing

Crows footing - no lube between the pinion and the ring gear - hash marks in the gear



**Code: K**

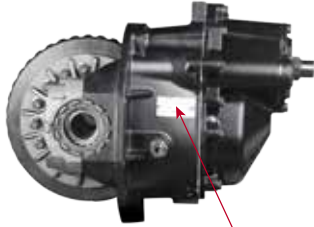
**EXCESSIVE RUST THAT CAUSES PITTING AND DAMAGE (DUE TO PROLONGED WEATHER EXPOSURE)**



## SERIAL TAG LOCATIONS

Forward Tandem Carrier

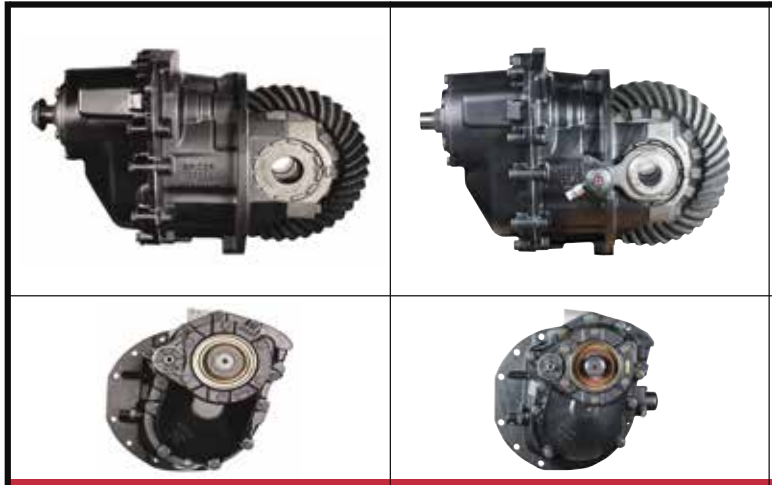
Rear Tandem/Single Axle Carrier



Tag Location



Tag Location



DS344, DS404, DS405, DS404P, DS405P, DSH40, DSH40P, DH44, DSH44P, DSP40, DSP41, DSP40P, DSP41P, DST40, DST41P

DD404, DD404P, DDH40, DDH40P, DDP40, DDP40P



D170, D170P, S170E

D170D, D170DP, S170DE

S170, S170BC, S170NS, S170R, R170

S170D, S170DBC, S170DR, R170D

Axle Model	Core Deposit	Deduction		
		0%	50%	100%
		1	2	3
R145S	\$500	\$500	\$250	\$-
D155, D155P, D156, D156P	\$1,750	\$1,750	\$875	\$-
D155D, D155DP, D156D, D156DP	\$1,750	\$1,750	\$875	\$-
R155, R156, R155/156	\$1,000	\$1,000	\$500	\$-
R155D, R156D, R155/156D	\$1,000	\$1,000	\$500	\$-
D170, D170P, S170E, D172, D172P	\$2,500	\$2,500	\$1,250	\$-
D170D, D170DP, S170DE, D172D, D172DP	\$3,000	\$3,000	\$1,500	\$-
S170, S170BC, S170NS, S170R	\$2,000	\$2,000	\$1,000	\$-
S170D, S170BC, S170DR	\$2,000	\$2,000	\$1,000	\$-
S/R172, S/R172P	\$2,000	\$2,000	\$1,000	\$-
S/R172D, S/R172DP	\$2,000	\$2,000	\$1,000	\$-
S/R175, S/R175P	\$2,500	\$2,500	\$1,250	\$-
S/R175D, S/R175DP	\$2,500	\$2,500	\$1,250	\$-
D190, D190D, D590, D590D, S190DE, S190E, S590, S590D	\$3,000	\$3,000	\$1,500	\$-
S190, S190D, S190DR, S190NS, S190R	\$2,500	\$2,500	\$1,250	\$-
DD404, DD404P, DDH40, DDH40P, DDP40, DDP40P	\$1,200	\$1,200	\$600	\$-
DS344, DS404, DS405, DS404P, DS405P, DSH40, DSH40P, DSH44, DSH44P, DSP40, DSP41, DSP40P, DSP41P, DST40, DST41P	\$1,000	\$1,000	\$500	\$-
19060D, 19060D PB, 21060D, 21060D PB, P20060DR, RD404, RD405, RDH40, RDH44, RDP40, RDP41	\$900	\$900	\$450	\$-
19060S, 19060S BC, 19060S NS, 19060NS PB, 19060S PB, 19060S PB BC, 21060S, 21060S BC, 21060S PB, P20060R, P22060S, RS404, RS405, RSH40, RSH44, RSH44 NS, RSP40, RSP41	\$750	\$750	\$375	\$-
(e)S9000r	\$5,000	\$5,000	\$2,500	\$-

**Code: A**  
Visible cracks, bulges, broken carrier or power divider cover

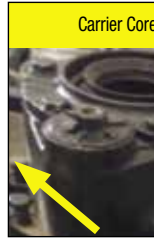


Failure crack through carrier housing

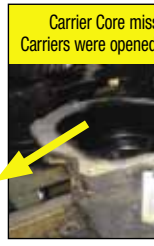


Bulge/crack in carrier housing

**Code: B**  
Carrier Core missing



Carrier Core missing



Carrier Core missing  
Carriers were opened

To place orders for all genuine Spicer® products,



# ION CHART

			Diff lock not shown. 
19060S, 19060S BC, 19060S NS PB, 19060S PB, 19060S PB BC, 21060S, 21060S BC, 21060S PB, P20060R, P22060S, RS404, RS405, RSH40, RSH44, RSH44 NS, RSP40, RSP41	19060D, 19060D PB, 21060D, 21060D PB, P20060DR, RD404, RD405, RDH40, RDH44, RDP40, RDP41	D155, D155P, D156, D156P	D155D, D155DP, D156D, D156DP
			Diff lock not shown. 
D190, D190D, D590, D590D, S190DE, S190E, S590, S590D	S190, S190D, S190DR, S190NS, S190R, R190, R190D	R155, R156, R155/156	R155D, R156D, R155/156D

\*R145S (PRO-40), S/R172 and S/R175 MODELS NOT ILLUSTRATED

## SPICER® CORE DEDUCTIONS

**Code: B**  
Missing parts

Missing "Input Shaft"



Missing "Power Divider Cover" -  
Cover up and additional parts missing



**Code: C**  
Disassembled carrier

Carrier Cores sent in disassembled,  
usually in baskets, on skids or in boxes



**Code: D**  
Burned-up unit (low and/no oil)

Carrier Cores with evidence of failure related to  
low or no oil (burn-ups) are not eligible for credit



Crows footing - no lube between the pinion  
and the ring gear - hash marks in the gear



**Code: E**

Core not an active core part number. Carrier Core must be included  
in an active core part number (see Table 2) to be eligible for credit

**Code: F**

Shipment of less than three (3) cores

**Code: G**

Failure to Drain carrier  
Carrier Core must have all lubricants drained before shipment  
Any core received with lubricant will be subject to deduction

**Code: H**

Unable to Rotate Freely and/or Broken Parts

**Code: I**

Missing and/or Damaged PDU Parts

**Code: J**

Missing and/or Damaged Gearing Including crows footing  
Crows footing - no lube between the pinion and the ring gear  
- hash marks in the gear

**Code: K**

Excessive rust that causes pitting and damage (due to prolonged  
weather exposure)



# Notes

---

---

---

---

---

---

---

---

---

---

---

---

---

---

---

---

---

---

---

---

---

---

---

---

---

---

---

---

---

---

# UPGRADES THAT WON'T LET YOU DOWN.™

*I need my vehicle to be as reliable as I am.*

## For the Lifespan of Your Vehicle, Trust Dana Aftermarket.™

At Dana, we know that your customers' vehicles are more than just a means of transport; they help support what's most important to them. So to keep your business successful, you need to carry the parts that help clients avoid unnecessary downtime. That's why Dana engineers our OE-quality driveline components and sealing solutions for high-mileage vehicles with dependable performance and quality. For more information, visit [SpicerParts.com/CV-Upgrade](https://www.SpicerParts.com/CV-Upgrade).



**Aftermarket**

SpicerParts.com or for our e-catalog, DanaAftermarket.com  
#DanaAftermarket

© 2019 Dana Limited. All rights reserved.

Product Information: [SpicerParts.com](https://www.SpicerParts.com) | E-Catalog and parts locator: [DanaAftermarket.com](https://www.DanaAftermarket.com)

**Dana Aftermarket Group**

PO Box 1000 Maumee, Ohio 43537

Warehouse Distributors: 1.800.621.8084

OE Dealers: 1.877.777.5360

Follow Dana Aftermarket [f](#) [t](#) [v](#) [in](#)

© 2021 Dana Limited. All rights reserved. HAXL-COREGUIDE-122021

**SPICER**<sup>®</sup>

